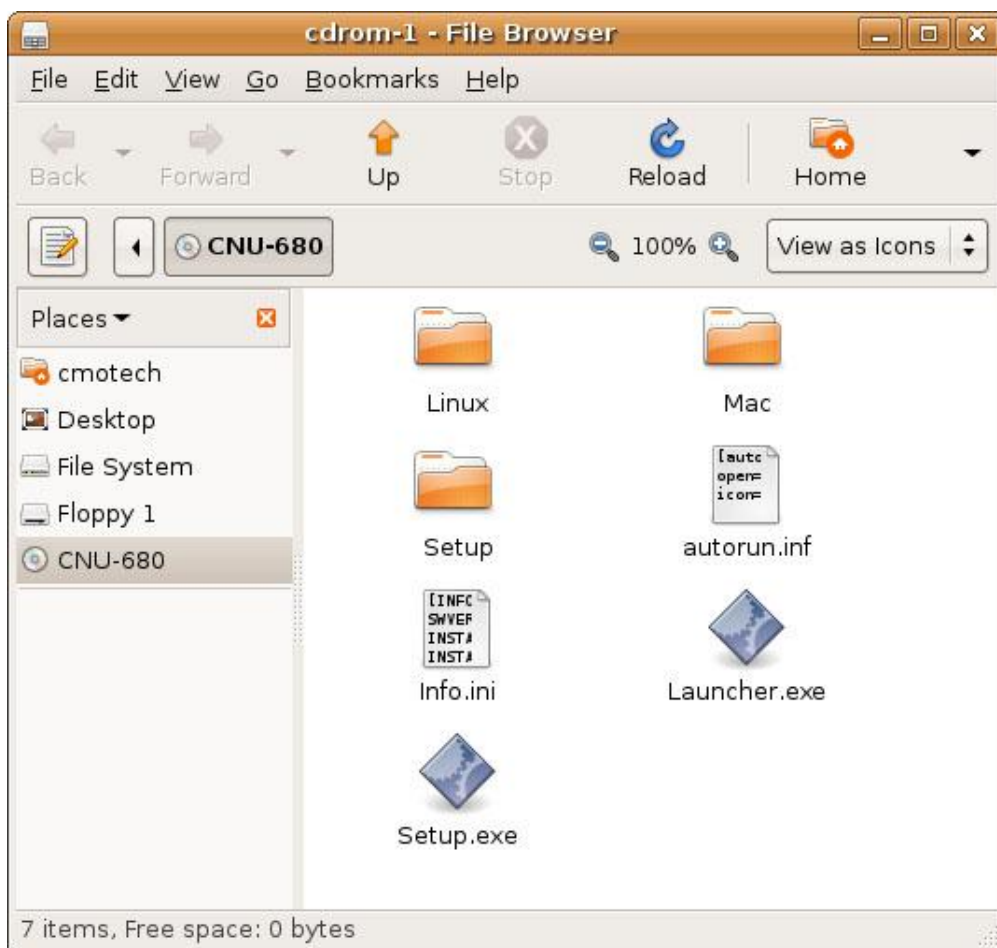


CNU-680 Modem User Guide for Linux

Modem Recognition

Plug the CNU-680 into the USB port of computer

Wait until displaying the CNU-680 CD Icon on the desktop



Open the terminal window and move to Linux folder in the CD

```
cmotech@cmotech-desktop:~$ cd ..
cmotech@cmotech-desktop:/home$ cd ..
cmotech@cmotech-desktop:/$ ls
bin  cdrom  etc  initrd  lib  media  opt  root  srv  tmp  var
boot dev  home  initrd.img  lost+found  mnt  proc  sbin  sys  usr  vmlinuz
cmotech@cmotech-desktop:/$ cd media
cmotech@cmotech-desktop:/media$ ls
cdrom  cdrom0  cdrom-1  floppy  floppy0
cmotech@cmotech-desktop:/media$ cd cdrom-1
cmotech@cmotech-desktop:/media/cdrom-1$ ls
autorun.inf  Info.ini  Launcher.exe  Linux  Mac  Setup  Setup.exe
cmotech@cmotech-desktop:/media/cdrom-1$ cd Linux
cmotech@cmotech-desktop:/media/cdrom-1/Linux$ ls
RDEVCHG  Readme.txt
cmotech@cmotech-desktop:/media/cdrom-1/Linux$
```

Type “sudo ./RDEVCHG” and run RDEVCHG

```
cmotech@cmotech-desktop:~$ cd ..
cmotech@cmotech-desktop:/home$ cd ..
cmotech@cmotech-desktop:/$ ls
bin  cdrom  etc  initrd  lib  media  opt  root  srv  tmp  var
boot dev  home  initrd.img  lost+found  mnt  proc  sbin  sys  usr  vmlinuz
cmotech@cmotech-desktop:/$ cd media
cmotech@cmotech-desktop:/media$ ls
cdrom  cdrom0  cdrom-1  floppy  floppy0
cmotech@cmotech-desktop:/media$ cd cdrom-1
cmotech@cmotech-desktop:/media/cdrom-1$ ls
autorun.inf  Info.ini  Launcher.exe  Linux  Mac  Setup  Setup.exe
cmotech@cmotech-desktop:/media/cdrom-1$ cd Linux
cmotech@cmotech-desktop:/media/cdrom-1/Linux$ ls
RDEVCHG  Readme.txt
cmotech@cmotech-desktop:/media/cdrom-1/Linux$ sudo ./RDEVCHG
Password:
RDEVCHG Linux Version : 1.0
Please, Wait!
Bus 004 Device 026: ID 16d8:680a
.
Success SwitchMode.
cmotech@cmotech-desktop:/media/cdrom-1/Linux$
```

When it displays “Success SwitchMode”, the CNU-680 is recognized normally
Move to the “/dev” folder and check there “ttyACMx”

```

cdrom      ptya7  ptyd2  ptypd  pty8  ptyv3  ptyxe  ram3  tty28  ttya6  ttyca  tty5  ttys6  ttyu7  ttyx2  ttyzd
console    ptya8  ptyd3  ptype  pty9  ptyv4  ptyxf  ram4  tty29  ttya1  ttycb  tty6  ttys6  ttyu8  ttyx3  ttyze
core       ptya9  ptyd4  ptypf  ptya  ptyv5  ptyyf  ram5  tty3  ttya2  ttycc  tty7  ttys1  ttyu9  ttyx4  ttyzf
disk       ptyaa  ptyd5  ptyq6  ptyb  ptyv6  ptyy1  ram6  tty30  ttya3  ttycd  tty8  ttys1  ttyua  ttyx5  urandom
dri        ptyab  ptyd6  ptyq1  ptyc  ptyv7  ptyy2  ram7  tty31  ttya4  ttyce  tty9  ttys2  ttyub  ttyx6  vcs1
dsp        ptyac  ptyd7  ptyq2  ptyd  ptyv8  ptyy3  ram8  tty32  ttya5  ttycf  ttya  ttys2  ttyuc  ttyx7  vcs1
fb0        ptyad  ptyd8  ptyq3  ptye  ptyv9  ptyy4  ram9  tty33  ttya6  ttyd0  ttyb  ttys3  ttyud  ttyx8  vcs2
fd         ptyae  ptyd9  ptyq4  ptyf  ptyva  ptyy5  random  tty34  ttya7  ttyd1  ttyc  ttys3  ttyue  ttyx9  vcs3
fd0        ptyaf  ptyda  ptyq5  ptyt  ptyvb  ptyy6  rtc  tty35  ttya8  ttyd2  ttyd  ttys4  ttyuf  ttyxa  vcs4
full       ptyb0  ptydb  ptyq6  ptyt1  ptyvc  ptyy7  scd1  tty36  ttya9  ttyd3  ttye  ttys5  ttyv0  ttyxb  vcs5
hda        ptyb1  ptydc  ptyq7  ptyt2  ptyvd  ptyy8  sda  tty37  ttyaa  ttyd4  ttyf  ttys6  ttyv1  ttyxc  vcs6
hdb        ptyb2  ptydd  ptyq8  ptyt3  ptyve  ptyy9  sg0  tty38  ttyab  ttyd5  ttyq  ttys7  ttyv2  ttyxd  vcs7
hdb1       ptyb3  ptyde  ptyq9  ptyt4  ptyvf  ptyya  sg1  tty39  ttyac  ttyd6  ttyq1  ttys8  ttyv3  ttyxe  vcs8
hdb2       ptyb4  ptydf  ptyqa  ptyt5  ptyv0  ptyyb  shm  tty40  ttyacm  ttyd7  ttyq2  ttys9  ttyv4  ttyxf  vcsa
hdb5       ptyb5  ptye0  ptyqb  ptyt6  ptyw1  ptyyc  snapshot  tty46  ttyad  ttyd8  ttyq3  ttysa  ttyv5  ttyy0  vcsa1
hpet       ptyb6  ptye1  ptyqc  ptyt7  ptyw2  ptyyd  snd  tty41  ttyae  ttyd9  ttyq4  ttysb  ttyv6  ttyy1  vcsa2
hwrng     ptyb7  ptye2  ptyqd  ptyt8  ptyw3  ptyye  sndstat  tty42  ttyaf  ttyda  ttyq5  ttysc  ttyv7  ttyy2  vcsa3
initctl   ptyb8  ptye3  ptyqe  ptyt9  ptyw4  ptyyf  sr1  tty43  ttyb0  ttydb  ttyq6  ttysd  ttyv8  ttyy3  vcsa4
input     ptyb9  ptye4  ptyqf  ptyta  ptyw5  ptyz0  stderr  tty44  ttyb1  ttydc  ttyq7  ttysf  ttyv9  ttyy4  vcsa5
kmem      ptyba  ptye5  ptyrb  ptytb  ptyw6  ptyz1  stdin  tty45  ttyb2  ttydd  ttyq8  ttysf  ttyva  ttyy5  vcsa6
kmsg      ptybb  ptye6  ptyr1  ptytc  ptyw7  ptyz2  stdout  tty46  ttyb3  ttyde  ttyq9  ttysf  ttyvb  ttyy6  vcsa7
log       ptybc  ptye7  ptyr2  ptytd  ptyw8  ptyz3  tty  tty47  ttyb4  ttydf  ttyqa  ttysf  ttyvc  ttyy7  vcsa8
loop0     ptybd  ptye8  ptyr3  ptyte  ptyw9  ptyz4  tty0  tty48  ttyb5  ttye0  ttyqb  ttysf  ttyvd  ttyy8  xconsole
lp0       ptybe  ptye9  ptyr4  ptytf  ptywa  ptyz5  tty1  tty49  ttyb6  ttye1  ttyqc  ttysf  ttyve  ttyy9  zero
MAKEDEV  ptybf  ptyea  ptyr5  ptyu0  ptywb  ptyz6  tty10  tty5  ttyb7  ttye2  ttyqd  ttysf  ttyv1  ttyy0  vcsa1
mem       ptyc0  ptyeb  ptyr6  ptyu1  ptywc  ptyz7  tty11  tty50  ttyb8  ttye3  ttyqe  ttysf  ttyv2  ttyy1  vcsa2
mixer     ptyc1  ptyec  ptyr7  ptyu2  ptywd  ptyz8  tty12  tty51  ttyb9  ttye4  ttyqf  ttysf  ttyw1  ttyy2  vcsa3
net       ptyc2  ptyed  ptyr8  ptyu3  ptywe  ptyz9  tty13  tty52  ttyba  ttye5  ttyr0  ttysf  ttyw2  ttyy3  vcsa4
null      ptyc3  ptyee  ptyr9  ptyu4  ptywf  ptyza  tty14  tty53  ttybb  ttye6  ttyr1  ttysf  ttyw3  ttyy4  vcsa5
nvidia0   ptyc4  ptyef  ptyra  ptyu5  ptyx0  ptyzb  tty15  tty54  ttybc  ttye7  ttyr2  ttysf  ttyw4  ttyy5  vcsa6
nvidiactl ptyc5  ptye0  ptyrb  ptyu6  ptyx1  ptyzc  tty16  tty55  ttybd  ttye8  ttyr3  ttysf  ttyw5  ttyy6  vcsa7
port      ptyc6  ptyp1  ptyrd  ptyu7  ptyx2  ptyzd  tty17  tty56  ttybe  ttye9  ttyr4  ttysf  ttyw6  ttyy7  vcsa8
ppp       ptyc7  ptyp2  ptyrd  ptyu8  ptyx3  ptyze  tty18  tty57  ttybf  ttyea  ttyr5  ttysf  ttyw7  ttyy8  vcsa9
psaux     ptyc8  ptyp3  ptyre  ptyu9  ptyx4  ptyzf  tty19  tty58  ttyc0  ttyeb  ttyr6  ttysf  ttyw8  ttyy9  vcsa10
ptmx      ptyc9  ptyp4  ptyrf  ptyua  ptyx5  ram0  tty2  tty59  ttyc1  ttyec  ttyr7  ttysf  ttyw9  ttyz0  vcsa11
pts       ptyca  ptyp5  ptye0  ptyub  ptyx6  ram1  tty20  tty6  ttyc2  ttyed  ttyr8  ttysf  ttywa  ttyz1  vcsa12
ptya0     ptycb  ptyp6  ptye1  ptyuc  ptyx7  ram10  tty21  tty60  ttyc3  ttyee  ttyr9  ttysf  ttywb  ttyz2  vcsa13
ptya1     ptycc  ptyp7  ptye2  ptyud  ptyx8  ram11  tty22  tty61  ttyc4  ttyef  ttyra  ttysf  ttywc  ttyz3  vcsa14

```

cmotech@cmotech-desktop: /dev\$

If a “ttyACMx” is listed, the CNU-680 works normally

Connect internet

Copy execute.sh from Linux folder in the CD drive disk to another folder on the hard disk.

Open a terminal window, navigate to the folder with execute.sh, and input “sh execute.sh”

```
cmotech@cmotech-desktop:~/Desktop$ sh execute.sh
--> CNU680 Linux Connection

ttyS0<*1>: ATQ0 V1 E1 -- failed with 2400 baud, next try: 9600 baud
ttyS0<*1>: ATQ0 V1 E1 -- failed with 9600 baud, next try: 115200 baud
ttyS0<*1>: ATQ0 V1 E1 -- and failed too at 115200, giving up.
Modem Port Scan<*1>: S1 S2 S3
WvModem<*1>: Cannot get information for serial port.
ttyACM0<*1>: ATQ0 V1 E1 -- OK
ttyACM0<*1>: ATQ0 V1 E1 Z -- OK
ttyACM0<*1>: ATQ0 V1 E1 S0=0 -- OK
ttyACM0<*1>: ATQ0 V1 E1 S0=0 &C1 -- OK
ttyACM0<*1>: ATQ0 V1 E1 S0=0 &C1 &D2 -- OK
ttyACM0<*1>: ATQ0 V1 E1 S0=0 &C1 &D2 +FCLASS=0 -- OK
ttyACM0<*1>: Modem Identifier: ATI -- Manufacturer: I: C-MOTECH Co., Ltd.
ttyACM0<*1>: Speed 4800: AT -- OK
ttyACM0<*1>: Speed 9600: AT -- OK
ttyACM0<*1>: Speed 19200: AT -- OK
ttyACM0<*1>: Speed 38400: AT -- OK
ttyACM0<*1>: Speed 57600: AT -- OK
ttyACM0<*1>: Speed 115200: AT -- OK
ttyACM0<*1>: Speed 230400: AT -- OK
ttyACM0<*1>: Speed 460800: AT -- OK
ttyACM0<*1>: Max speed is 460800; that should be safe.
```

When it connects, a CONNECT is displayed

CONNECT

```
--> Carrier detected. Starting PPP immediately.
--> Starting pppd at Tue Sep 11 21:16:02 2007
--> Warning: Could not modify /etc/ppp/pap-secrets: Permission denied
--> --> PAP (Password Authentication Protocol) may be flaky.
--> Warning: Could not modify /etc/ppp/chap-secrets: Permission denied
--> --> CHAP (Challenge Handshake) may be flaky.
--> Pid of pppd: 9582
--> Using interface ppp0
--> pppd: 0 00p[0c][06][08]8[0f][06][08]
--> pppd: 0 00p[0c][06][08]8[0f][06][08]
--> pppd: 0 00p[0c][06][08]8[0f][06][08]
--> pppd: 0 00p[0c][06][08]8[0f][06][08]
--> pppd: 0 00p[0c][06][08]8[0f][06][08]
--> pppd: 0 00p[0c][06][08]8[0f][06][08]
--> local IP address 10.160.32.225
--> pppd: 0 00p[0c][06][08]8[0f][06][08]
--> remote IP address 10.64.64.64
--> pppd: 0 00p[0c][06][08]8[0f][06][08]
--> primary DNS address 211.234.229.23
--> pppd: 0 00p[0c][06][08]8[0f][06][08]
--> secondary DNS address 203.236.43.5
--> pppd: 0 00p[0c][06][08]8[0f][06][08]
```

Disconnect internet

Input Ctrl+C in the terminal window, it is disconnected

```
--> pppd: 0 00p[0c][06][08]8[0f][06][08]
--> pppd: 0 00p[0c][06][08]8[0f][06][08]
--> pppd: 0 00p[0c][06][08]8[0f][06][08]
--> pppd: 0 00p[0c][06][08]8[0f][06][08]
--> pppd: 0 00p[0c][06][08]8[0f][06][08]
--> pppd: 0 00p[0c][06][08]8[0f][06][08]
--> local IP address 10.160.32.225
--> pppd: 0 00p[0c][06][08]8[0f][06][08]
--> remote IP address 10.64.64.64
--> pppd: 0 00p[0c][06][08]8[0f][06][08]
--> primary DNS address 211.234.229.23
--> pppd: 0 00p[0c][06][08]8[0f][06][08]
--> secondary DNS address 203.236.43.5
--> pppd: 0 00p[0c][06][08]8[0f][06][08]
Caught signal 2: Attempting to exit gracefully...
--> Terminating on signal 15
--> pppd: 0 00p[0c][06][08]8[0f][06][08]
--> Connect time 0.7 minutes.
--> pppd: 0 00p[0c][06][08]8[0f][06][08]
--> pppd: 0 00p[0c][06][08]8[0f][06][08]
--> pppd: 0 00p[0c][06][08]8[0f][06][08]
--> Disconnecting at Tue Sep 11 21:16:42 2007

cmotech@cmotech-desktop:~/Desktop$ █
```